

## **‘Kyiv River Gate’ is a new formula for revitalizing the archaeological heritage in the historical core of the ancient city**

Mykhaylo SAHAYDAK, Center of Archeology of Kyiv of the NAS of Ukraine

Olga RUTKOVSKA, Art critic, a full member of ICOMOS, Ukraine

Vitaliy BILETSKY, Lawyer, member of the Main Council of UTOPIA, Ukraine

Igor and Natalie YURCHAK, Igor Yurchak’s Creative Studio, Ukraine

### **Abstract:**

Excavations conducted in 2014-2018 by the Center of Archeology of Kyiv of the National Academy of Sciences of Ukraine on Poshtova Square in Kyiv prove that among the archeological territories of the city there are those where it is possible to observe how the city can remain unchanged in its planning structure for many centuries. These include the place where the modern Poshtova Square is located, which stands out in the relatively flat relief of the Lower Town - Podil. The location of archeological complexes testified that from the second half of the 11 century to the end of the 13 century the removal cone "grew" by several meters. The main source of proluvium should be considered Mikhailovsky (Borychiv?) Uzviz - the route of the modern funicular. Obviously, the chronology of the first arrangement of the descent dates back to the 10 century. This fact can be clarified by further excavations, as the initial development horizon lies at a mark that lies 4 m below the studied horizon. As a result of archaeological and geomorphological research, we proposed the hypothesis that the chronicle Pochayna river (right bank of the Dnieper) flowed in the 10-11 centuries along the root bank of the Kyiv Mountains, so it is very likely that Podil during this period should look like a floodplain island. As it turned out, from the second half of the 11 century, when the channel of the ancient Pochayna was already covered with alluvial-proluvial deposits and moved closer to the main course of the Dnieper, there is an active formation of manor - yard buildings. It gives rise to the main planning axis of Podil - the main street, which continued to operate until the catastrophic fire of 1811. The importance of this place proves the fact that in the study of the estate was discovered a series of so-called "hanging" stamps dating from the second half of 11 to the first half of the 12 century. The attribution of these finds shows that this act material belongs to one of the branches of the Grand Ducal Kyivan dynasty - Monomakhovych. The picture of the building is complemented by the fact that in 2012 the remains of a small wooden Christian church of the 12 century were studied on the adjacent section of Podil.

The unique monument of archeology and history ‘Site of the coastal city quarter of medieval Kyiv’ (11th - 19th centuries) on one of the oldest squares - Poshtova Square - has been the object of public resonance for more than two years and the subject of discussions about the creation of modern Archaeological Museum. Already during the research of the monument in 2014-2016, the planning structure discovered by archaeologists, the remains of wooden buildings and the findings of the medieval quarter on the Poshtova Square entered scientific circulation and aroused considerable interest of the international scientific community. However, by the beginning of 2018, the remnants of the quarter were threatened with destruction by many factors, which together opened the possibility for the construction of an underground shopping center. The very idea of protecting the monument and creating a modern museum on it prompted a large community of Kyivites from more than 15 public associations to launch an indefinite peaceful action on June 20, 2018, which continues to this day. On November 23, 2019, the peaceful action was recognized as a record of Ukraine (registration № 33 / 02-20207).

During the peaceful action, the monument gained national status at the initiative of its participants, and at the initiative of V. Biletsky and the support of the National Union of Architects of Ukraine, the first public competition for the best concept of the historical and cultural tourist center ‘Kyiv River Gate’ was held on Poshtova Square. The aim of the competition was to find the best idea for the rehabilitation and development of the cognitive resource of the public space of the square, as an integral part of the center of Kyiv. The competition lasted from November 1, 2018 to July 19, 2019. In conducting the competition according to the rules set by the national legislation of Ukraine, we used an unusual technology - a series of expert discussions on urban, transport, historical, tourist, environmental context and provided a completely independent online evaluation for the jury. The winners of the competition were selected by a highly professional jury, and the best competition proposals were the concepts of professional teams of Kyiv architect Lyudmila Bazhenova and Igor Yurchak’s Creative Studio. The results of the competition, as well as the idea of creating a historical and cultural tourist center "River Gate of Kyiv", combined with the marketing concept of V. Biletsky on the development of the territory taking into account the potential of Old Podil, State Historical and Architectural Reserve "Ancient Kyiv" and other areas of Kyiv were

repeatedly presented both in the National Union of Architects of Ukraine and in the Kyiv City Council, as well as at the International Architectural Biennale in Krakow MBA Krakow 2019 in the section of concepts (section B). The purpose of the concept of the Center 'Kyiv River Gate' is to change the attitude to cultural heritage as a ballast, to reveal its potential, to form a tourist network and to ensure sustainable development with efficient and balanced use of monuments of the oldest urban area of 175 hectares. Igor Yurchak's Concept of the organization of the public space of Poshtova Square presents most comprehensive urban analysis of the location of the object in the body of the city as a result of detailed analysis the perception, accessibility, functional zoning, semantics and physical state of Poshtova Square.

### **Concept of the organization of the public space of Poshtova Square**

#### Transport hubs and transits

In order to arrange a comfortable space of Poshtova Square, to include it in the network of tourist accents along the Dnieper, to maximize the connection of the isolated space of the square with its historical connections on Podil and to form the integrity of the image of Podil on the map of Kyiv:

- walking tram, to the south, along the cliff above the Dnieper, the total length of the route "History Arc" - 7 km
- carriage, to the north, along the small ring of Podil, the total length of the route is 2.8 km.
- river tram along the Dnieper, to the south, from the legendary Prityka to Navodnytsky Park, the total length of the river route - 5.5 km

#### Walking island-bridge

A walking arrow through the entire space of the gallery, through the River Station, over the embankment across the bridge leads to a floating island centered in a stylized lighthouse, from which visitors in a glass capsule can sink to the bottom of Dnieper river.

#### Underground museum

The Underground Museum on Poshtova Square is a three-level space, which is conditionally divided into three functional zones:

1. Communication and transit zone, which forms the flow of visitors and their distribution in accordance with the program of stay in the museum (through all 3 levels)
2. The zone of historical reconstruction, covering all three levels of the museum, two of which are the authentic location of the historical building (quarter) of the corresponding layer. Thus, the exposition of the museum will chronologically demonstrate 2 different cultural layers with the most preserved artifacts and the uniqueness of their occurrence.
3. Interactive zone of the multimedia show - through -1, -2, -3 levels, where the history of Poshtova Square is presented using a creative digital product that creates a deep immersive effect (with 3D mapping, panoramic shooting, animation, acoustic and special effects). In addition, the design features provide natural lighting of all levels of the interactive zone through the transparent bottom of the Perun Fountain, which will add depth and effect.

Underground exposition mine 'Geology of Podil' is an excursion route in a glass elevator with the ability to view the geological layers of Poshtova Square through all 3 levels

#### Exposition zoning

Level -1 provides a museum space with a children's play area Kyiv Grad, an area of innovative education for groups of preschoolers and schoolchildren (3-5, 6-9, 10-13 years) and locations of partial review of the expositions of lower levels

1. Entrance distribution group
2. Elevator of the through underground exposition mine 'Geology of Podil'
3. Observation deck of the panoramic layout 'History of Podil' (highest vantage point)

4. Kyiv Grad play area

5. Children's interactive area (halls-transformers for mini-theater, lecture hall and games)

6. Exposition zone of historical reconstruction 'Prehistoric Kyiv' (overview)

Level -2 provides a museum space with the main exposition of historical reconstruction 'The medieval quarter of the Kyiv Podil in the 15th century' on the site of authentic archeological finds and the area of partial inspection of the exposition of the lower level 'Prehistoric Kyiv' and the excursion tram stop along the 'Arc of History'

1. Entrance distribution group in Level -2

2. Elevator of the through underground exposition mine 'Geology of Podil' in Level -2

3. Observation deck of the panoramic layout 'History of Podil' in Level -2

4. The main exposition of the historical reconstruction 'The medieval quarter of the Kyiv Podil in the 15th century'.

5. Exposition zone of historical reconstruction 'Prehistoric Kyiv' in Level -2

Level -3 provides a museum space with an arranged isolated transparent gallery exit of the subway, which is spatially zoning to 2 independent locations: the exposition of historical reconstruction 'Prehistoric Kyiv' on the site of authentic archaeological finds and the interactive area of the multimedia show from prehistoric times to the present

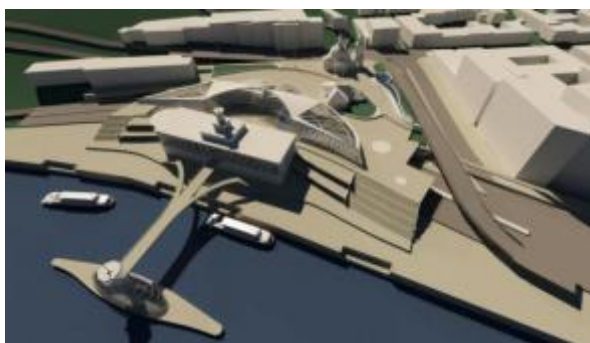
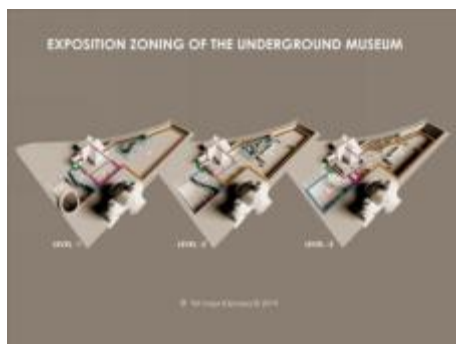
1. Entrance distribution group in Level -3

2. Elevator of the through underground exposition mine 'Geology of Podil' in Level -3

3. Isolated gallery exit of the subway

4. Interactive area of the multimedia show 'History of Podil' with an amphitheater

5. The main exposition of the historical reconstruction 'Prehistoric Kyiv'



**Keywords:** Medieval archeology, Kyiv, underground museum, public space

## References

Сагайдак Михайло. (2018). Археологічна пам'ятка в урбанізованому середовищі // Збірник наук праць. Фортеця.- Львів.- 2018.- С.157-158.

Sahaydak M. (2005). Medieval Kiev from the Perspective of an Archaeological Study of the Podil District// Ruthenika.- 2005. - №4 – S.157

Сагайдак М. А. (1991). Давньокіївський Поділ.- Київ.- 1991.- С.53

Сергій Тараненко. (2016). Планувальна структура давньоруського Подолу: формування та розвиток./ Варшава.-2016.- С.33; рис.21,22.

Рутковська О. Рекордні 525 днів мирної акції за створення музею на пам'ятці археології на Поштової площі. – 2019: <https://site.ua/olga.rutkovska/24240/>



Concept of development of the public space of the ancient Postal Square on the banks of the Dnieper

# Kyiv River Gate

Historical, cultural, tourist center

The place from which it all begins

